



rewaco[®]
Innovative triking



ALL INCLUSIVE



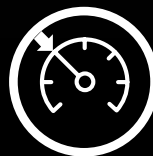
7-Speed Automatic
Transmission



Anti-Lock
Braking System



One-Key
System



Assistance
Systems



Acoustic
Entertainment

Touring

WITH THE NEW „TOURING“ MODELS
REWACO IS OPENING A NEW CHAPTER
OF TOURING TRIKES!

- **MORE COMFORT**
- **MORE DESIGN**
- **MORE ENTERTAINMENT**



Cockpit cover with windshield / Leg cover (removable without tools)
2 x 3 way and 2 x 2 way sound system / Navigation preparation / Large audio control panel in the cockpit
Two-Tone painting in 4 different color combinations
Comfort chassis / ABS / rewaco CruiseControl
Seat heating / One key system / etc.



The shown vehicle is equipped with further chargeable options

Touring

The rewaco „Touring“ models are available in the variants ST, GT and LT - each with three engine variants:

ST
GT
LT

- 1,5 Ltr. ATM 81 kW (110 hp)
- 1,5 Ltr. ATM Turbo 103 kW (140 hp)
- 1,5 Ltr. ATM Turbo+ 130 kW (177 hp)

**ALL
INCLUSIVE**
starting at
29,320 €*

excl. VAT and taxes

* The specified price is a recommended retail price for the model ST-2 ATM „Touring“ (81 kW) ex works Lindlar/Germany in Euro excl. VAT and registration tax, excluding destination charges and extra charges. Price and equipment changes are subject to change without prior notice. No liability is accepted for printing errors. Technical changes may be made without prior notice. Date: Oct. 2018 (NET) • Printed in Germany

ONLY THE BEST. The rewaco „Touring“ models contain the highlights from the equipment packages COMFORT, CLASSIC, DYNAMIC and EXCLUSIVE. A further plus are the TOURING Specials, which are only included in these models.

- Comfort chassis
- Comfort suspension
- Steering fork "Comfortline"
- Seat heating
- rewaco CruiseControl (only for Turbo models)
- High-performance brake system "R-Edition"
- ABS (Antilock braking system)
- 2 x 3-way and 2 x 2-way sound system with large audio control panel
- One key system
- Safety system I (immobilizer)
- Navigation preparation
- Handlebar „Touring“, polished
- Footrests for passenger with "QuickChange", adjustable
- Daytime running lights in LED
- Trunk lighting
- Back-driving alarm system
- Acoustic turn indicator warning
- Power-Shifter on handlebar
- Folding comfort bucket seat - easier to get on for the passenger
- Side impact protection foot boards
- Main and auxiliary head lights in clear glass
- Tire equipment front, 200/55 ZR 17 on alloy rim "Star" in silver and Tires equipment rear, 295/35 ZR 18 on alloy rims "Star" in silver

Touring SPECIALS



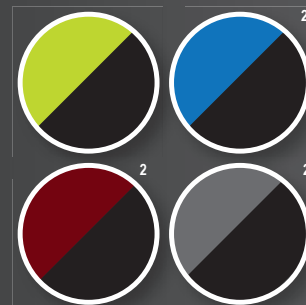
Cockpit cover
with windshield



Leg cover
(removable without
tools)



Sound &
Navigation
preparation



Two-Tone painting
in 4 different color
combinations

² Colour combinations Metallic, as well as other colours against surcharge

FURTHER EXTRAS

The „Touring“ models can be equipped with further chargeable options from the rewaco price list.

rewaco Partner

rewaco Spezialfahrzeuge GmbH

Schlosserstraße 24 • D-51789 Lindlar • Telephone +49 (0)2266/479999-0
info-service@rewaco.de • www.rewaco.com



rewaco®
Innovative triking

PRICE LIST
EXPORT (NET)

Touring

		Two-Tone painting uni
ST-2	1,5 ltr. 4 cylinder in-line engine (VCT) 81 kW (110 hp)	29,327 € ¹
	1,5 ltr. 4 cylinder in-line engine (VCT) with turbocharger 103 kW (140 hp)	31,345 € ¹
	1,5 ltr. 4 cylinder in-line engine (VCT) with turbocharger 130 kW (177 hp)	33,110 € ¹
GT	1,5 ltr. 4 cylinder in-line engine (VCT) 81 kW (110 hp)	30,168 € ¹
	1,5 ltr. 4 cylinder in-line engine (VCT) with turbocharger 103 kW (140 hp)	32,185 € ¹
	1,5 ltr. 4 cylinder in-line engine (VCT) with turbocharger 130 kW (177 hp)	33,950 € ¹
LT-2	1,5 ltr. 4 cylinder in-line engine (VCT) 81 kW (110 hp)	30,496 € ¹
	1,5 ltr. 4 cylinder in-line engine (VCT) with turbocharger 103 kW (140 hp)	32,513 € ¹
	1,5 ltr. 4 cylinder in-line engine (VCT) with turbocharger 130 kW (177 hp)	34,277 € ¹

Surcharges for additional extras

Two-Tone painting uni (Light green / Panther black)	•
Two-Tone painting metallic (Ocean / Panther black, Merlot / Panther black, Titan / Panther black)	1,008 € ²
Painting in special colour from the rewaco colour range	1,336 € ²
Tire equipment front, 200/55 ZR 17 on alloy rim (5 J x 17) and Tires equipment rear, 295/35 ZR 18 on alloy rims (11 J x 18) in black or titan-look	193 € ²
Motorcycle navigation system Garmin Zumo 345 LM	327 € ²

For further equipment options please refer the rewaco price list.

- Serial

¹ All specified prices are recommended retail prices ex works Lindlar/Germany in Euro excl. VAT and registration tax, excluding destination charges and extra charges.

² All specified surcharge prices are recommended retail prices ex works Lindlar/Germany in Euro excl. VAT.

The warranty and guarantee conditions apply in accordance with the standard of the terms and conditions of the manufacturer/importer. Price and equipment changes are subject to change without prior notice. No liability is accepted for printing errors. Technical changes may be made without prior notice. Date: October 2018 (NET) • Printed in Germany

rewaco Spezialfahrzeuge GmbH

Schlosserstraße 24 • D-51789 Lindlar • Telephone +49 (0)2266/479999-0 • Telefax +49 (0)2266/479999-29 • info-service@rewaco.de • www.rewaco.com